

Nine Signs You've Had a Chimney Fire



1 "Puffy" or "honey combed" creosote

2 Discolored and/or distorted rain cap

3 Warped metal of the damper, metal smoke chamber connector pipe or factory-built metal chimney

4 Evidence of smoke escaping through mortar joints of masonry or tile liners

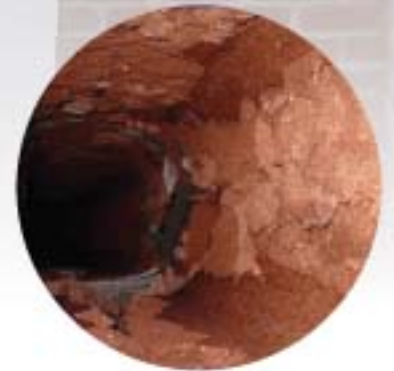
5 Cracked or collapsed flue tiles, or tiles with large chunks missing

6 Heat-damaged TV antenna attached to the chimney

7 Creosote flakes and pieces found on the roof or ground

8 Roofing material damaged from hot creosote

9 Cracks in exterior masonry



If you see any of these signs in your home, visit csia.org for more information and to find a CSIA certified technician in your area.

